

Project Boundary

Miles

GAI Consultants, Inc.
USGS Topographic Survey

Disclaimer: The information depicted on this figure is for conceptual purposes only, serves to aid a licensed engineer or geologist in rendering professional services, and is subject to review and approval by appropriate regulatory agencies.

USGS The National Map: National Boundaries Dataset, National Elevation Dataset, Geographic Names Information System, National Hydrography Dataset, National Land Cover Database, National Structures Dataset, and National Transportation Dataset; U.S. Census Bureau - TIGER/Line; HERE Road Data

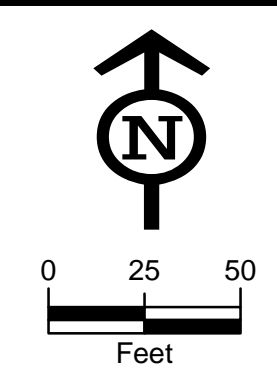
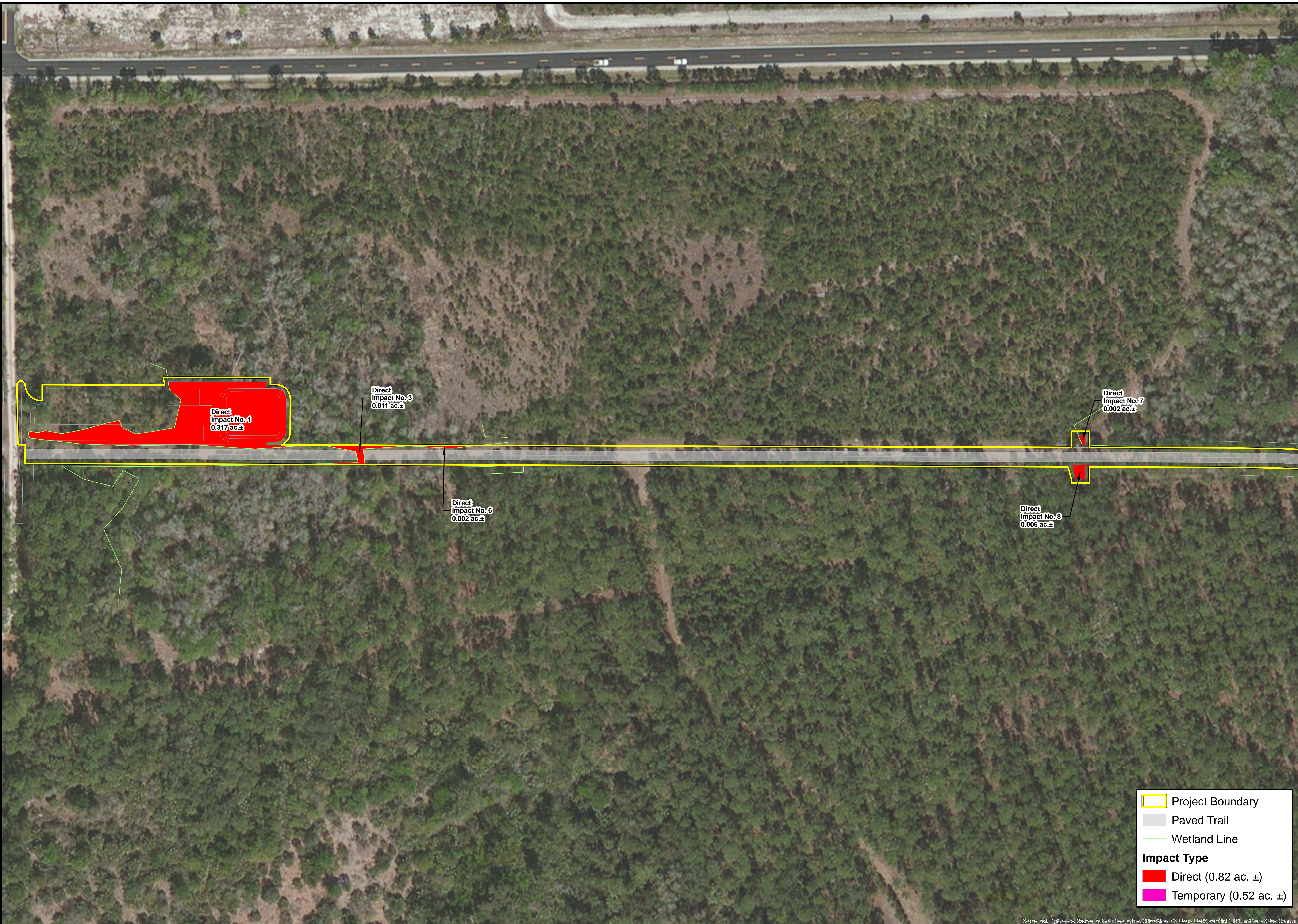
ENVIRONMENTAL SERVICES, INC.
7220 Financial Way, Suite 100
Jacksonville, Florida 32256
(904) 470-2200
(904) 470-2112 Fax
www.environmentalservicesinc.com

Project Location

East Central Regional Rail Trail Phases 4B and 5

Volusia County, Florida

Project:	EJ15382.01
Date:	Dec. 2016
Drawn By:	AA
Checked By:	JRN
Approved By:	FN
Figure:	1



Source(s): GAI Consultants, Inc. ESRI World Imagery BaseMap
 Disclaimer: This document is prepared on the basis of information provided by the client. It is not intended to be used for any purpose other than that for which it was prepared and is not to be relied upon for any legal or regulatory purposes.

ENVIRONMENTAL SERVICES, INC.
 7220 Financial Way, Suite 100
 Jacksonville, Florida 32256
 (904) 470-2500
 (904) 470-2112 Fax
 www.environmentalservicesinc.com

Proposed Site Conditions
**East Central Regional Rail Trail
 Phases 4B and 5**
 Volusia County, Florida

- Project Boundary
- Paved Trail
- Wetland Line
- Impact Type**
- Direct (0.82 ac. ±)
- Temporary (0.52 ac. ±)

Scale:	1" = 50'
Project:	EJ15382.01
Drawn By:	AA
Checked By:	BAA
Date:	Jun. 2017

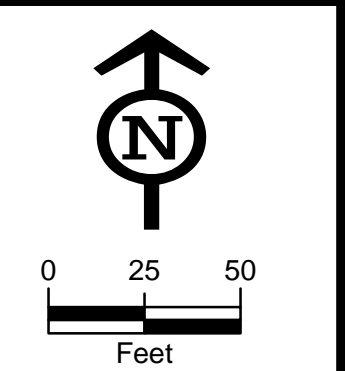
FIGURE NUMBER
3A
 Page 1 of 23



Direct
Impact No. 14
0.027 ac. ±

Direct
Impact No. 19
0.000 ac. ±

- Project Boundary
- Paved Trail
- Wetland Line
- Impact Type**
- Direct (0.82 ac. ±)
- Temporary (0.52 ac. ±)



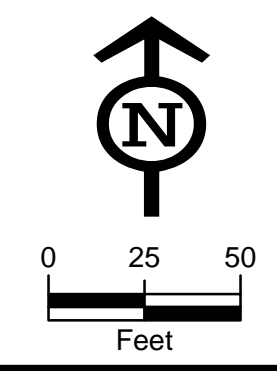
Source(s): GAI Consultants, Inc. ESRI World Imagery BaseMap

Disclaimer: The information depicted on this map is for informational purposes only. It is not intended to be used for regulatory purposes and is not approved by appropriate regulatory agencies.

ENVIRONMENTAL SERVICES, INC.
 7220 Financial Way, Suite 100
 Jacksonville, Florida 32256
 (904) 470-2200
 (904) 470-2121 Fax
 www.environmentalservicesinc.com

Proposed Site Conditions
**East Central Regional Rail Trail
 Phases 4B and 5**
 Volusia County, Florida

Scale:	1" = 50'
Project:	EJ15382.01
Drawn By:	AA
Checked By:	BAA
Date:	Jun. 2017



Source(s): GAI Consultants, Inc. ESRI World Imagery BaseMap

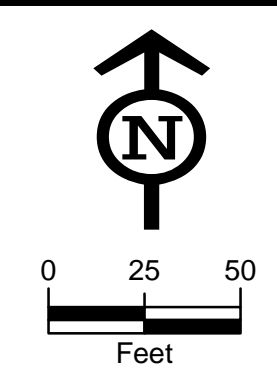
Disclaimer: The information depicted on this map is for informational purposes only. It is not intended to be used for regulatory purposes. The information is not intended to be used for regulatory purposes. It is not intended to be used for regulatory purposes.

ENVIRONMENTAL SERVICES, INC.
 7220 Financial Way, Suite 100
 Jacksonville, Florida 32256
 (904) 470-2500
 (904) 470-2112 Fax
 www.environmentalservicesinc.com

Proposed Site Conditions
East Central Regional Rail Trail
Phases 4B and 5
 Volusia County, Florida

Scale: 1" = 50'
 Project: EJ15382.01
 Drawn By: AA
 Checked By: BAA
 Date: Jun. 2017

FIGURE NUMBER
3C
 Page 3 of 23



Source(s): GAI Consultants, Inc. ESRI World Imagery BaseMap

Disclaimer: The information depicted on this map is for informational purposes only. It is not intended to be used for any regulatory or legal purposes. The information is provided as is, without any warranty, express or implied. The user assumes all liability for any use of this information.

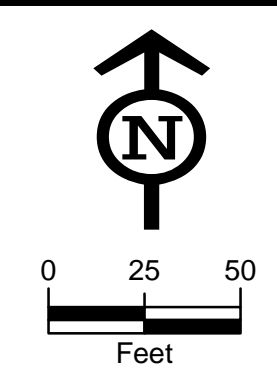
ENVIRONMENTAL SERVICES, INC.
 7220 Financial Way, Suite 100
 Jacksonville, Florida 32256
 (904) 470-2200
 (904) 470-2112 Fax
 www.environmentalservicesinc.com

Proposed Site Conditions
**East Central Regional Rail Trail
 Phases 4B and 5**
 Volusia County, Florida

Scale: 1" = 50'
 Project: EJ15382.01
 Drawn By: AA
 Checked By: BAA
 Date: Jun. 2017

FIGURE NUMBER
3D
 Page 4 of 23

- Project Boundary
- Paved Trail
- Wetland Line
- Impact Type**
- Direct (0.82 ac. ±)
- Temporary (0.52 ac. ±)



Source(s): GAI Consultants, Inc. ESRI World Imagery BaseMap

Disclaimer: The information depicted on this map is for informational purposes only. It is not intended to be used for regulatory purposes. The information is not intended to be used for regulatory purposes. It is not intended to be used for regulatory purposes.

ENVIRONMENTAL SERVICES, INC.
 7220 Financial Way, Suite 100
 Jacksonville, Florida 32256
 (904) 470-2500
 (904) 470-2112 Fax
 www.environmentalservicesinc.com

Proposed Site Conditions
**East Central Regional Rail Trail
 Phases 4B and 5**
 Volusia County, Florida

- Project Boundary
- Paved Trail
- Wetland Line
- Impact Type**
- Direct (0.82 ac. ±)
- Temporary (0.52 ac. ±)

Scale: 1" = 50'
 Project: EJ15382.01
 Drawn By: AA
 Checked By: BAA
 Date: Jun. 2017

FIGURE NUMBER
3E
 Page 5 of 23